



# WELDEX™

# 60

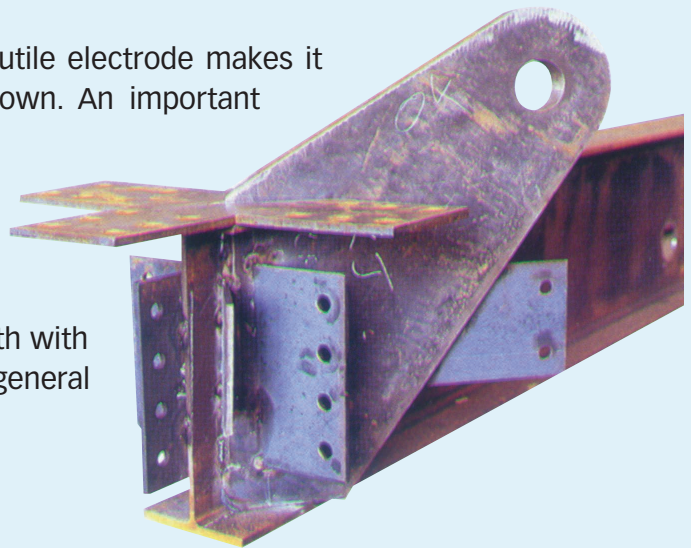
GENERAL PURPOSE - MILD STEEL WX60E6013E41121



## SPECIALLY DEVELOPED FOR A WIDE RANGE OF GENERAL FABRICATION APPLICATIONS IN THE WORKSHOP AND ON SITE

### Technical Information

The rapidly solidifying slag characteristic of this rutile electrode makes it outstanding in all positions, especially vertical down. An important feature of this electrode is that it enables the welder to weld in any position without repeated changes to the current setting, making it suitable for bridging large gaps and poorly fitting grooves. The slag is easily removed and there is minimal spatter produced. The weld bead is smooth with a fine ripple formation making it an excellent general purpose electrode.



### Unique Features

- All position touch welding electrode
- One amperage setting
- High tensile strength
- Very low temperature welding

### Application Procedures

Weldex 60 can be used in many different applications. Due to its rapidly solidifying slag, amperage settings, arc length and rod angle are not so crucial when using this electrode, making WX60 very user friendly in any fabrication welding situations.

### Technical Properties

		<u>SIZES</u>	<u>RECOMMENDED</u>
		<u>AVAILABLE</u>	<u>AMPERAGES</u>
Tensile Strength	- 5000mpa (73,000 psi)	2.6mm	50-90
Yield Strength	- 430mpa (62,000 psi)	3.2mm	90-130
Elongation of	- (5 x D) 25%	4.0mm	110-170